



Luzerne County Historical Society FORECAST

May 2017

Join Us!

Kids Crafts at the LCHS Museum
July 13 & 27; August 10 & 24
1 p.m.-3 p.m.

Join LCHS staff at the Museum, 69 Rear South Franklin Street, Wilkes-Barre, for Kids Crafts on selected Thursdays in July and August.



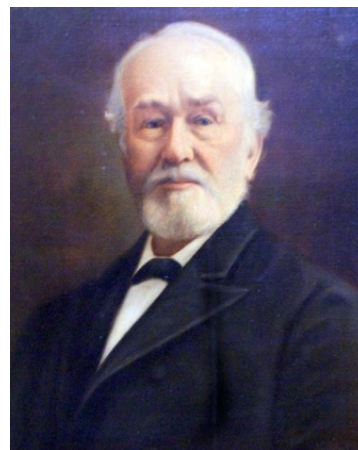
July 13: Build your own Hill Climber. \$12 for members; \$15 for non-members; limited to 12 kids. **Reservations required** at reservations@luzernehistory.org or 570-823-6244 ext. 3.

On **July 27, August 10, and August 24**, stop by to do a craft related to our exhibitions and museum collection. **FREE** for members on these days; \$5 for non-members (per child).

Thursday, August 3, 2017
Portrait Walk
Westmoreland Club, Wilkes-Barre
5:30 p.m.-7 p.m.

Join us for a Portrait Walk at the Westmoreland Club! Our tour guides will show off the LCHS portrait collection (on loan to the Club). Learn about the people of the past and their contributions to Luzerne County. Enjoy a complimentary glass of champagne (and cash bar) with light appetizers.

\$25 for members; \$35 for non-members. For more information or to make reservations, email reservations@luzernehistory.org or call 570-823-6244 ext. 3.



John Welles Hollenback (1827-1923), 1900, collection of the Luzerne County Historical Society, 87.119.1.

Bus Trip to the Museum of the American Revolution
Saturday, June 10, 2017, 8 a.m.-5 p.m.

Join us for a day trip to Philadelphia to explore the newly-opened **Museum of the American Revolution**. The trip includes round-trip coach transportation, admission to the museum and a special program on Philadelphia during the Revolution. After touring the museum at your own pace, have lunch on your own in Philadelphia (additional cost) and return to Luzerne County. **\$60 for members; \$75 for non-members. Reservations required in advance by May 24, 2017**—call 570-823-6244 ext. 3 or email reservations@luzernehistory.org.

LCHS Forecast
Vol. 14 No. 2
May 2017

Board of Directors

Dr. Jon Pollard, President
Mr. David Reed, 1st VP
Mr. William Leandri, 2nd VP
Stephen B. Killian, Esq., Treasurer
Ms. Molly Hinkin, Secretary

Mr. Joe Butkiewicz
Ms. Janet Flack
Mr. Gus Genetti
Mr. Carl Goeringer
Mr. Carl Handman, AIA
Ms. Tish Last
Mr. Brian Leffler
Ms. Nancy Lychos
Mr. Sam Marranca
Mr. Joseph Matteo
Mr. Tom O'Neill
Mr. Carl Rosencrance
Dr. Carol Sabatini
Susan Shoemaker, Esq.
Mr. Gary J. Stack
Mr. Mark E. Torbik
Mr. Michael Ward

Directors Emeritus

Mrs. Betsy Bell Condron
Mr. Henry C. Johnson*

**deceased*

Staff

Aimee E. Newell, Ph.D., Executive Director
Mark J. Riccetti Jr., Dir. of Ops. & Programs
Amada C. Fontenova, Dir. Of Lib. & Archives
Allyson Earl, Museum Assistant
Bob Schertzer, Mature Worker Program
Mary Walsh, Finance Manager

The mission of the Luzerne County Historical Society is to preserve and promote the collective history and heritage of Luzerne County, Pennsylvania.

Message from the Executive Director

Hello! As I write this, spring is here and summer is around the corner! Make sure you stop by the Museum to see our exhibition, “Bringing the Giant to Its Knees”: The History of the Giant’s Despair Hill-climb” before it closes on July 15! On July 15 and 16, we will offer our Battle of Wyoming Walks, following the path of the events of that crucial day. And, if you are interested in genealogy, make plans to join us for our Genealogy Workshop (limited space and reservations required) on August 12. This is just a taste of what we have planned—read on for more!

We will also be making some changes to our membership program as of July 1, 2017. See page 4 for more information. Thank you for your support of the Luzerne County Historical Society—I hope to see you soon!
Aimee E. Newell, Ph.D.



159th Annual Meeting
April 28, 2017

Thanks to all who attended our 159th annual meeting and gala dinner! We especially thank our sponsors and silent auction donors. We greatly appreciate the participation of our speakers, Lt. Col. Start (seen here) and SSgt. Keen from the 109th Field Artillery. We rely on the funds raised at the annual meeting to put on our exhibitions and programs throughout the year. We are looking forward to our 160th meeting in 2018!



Special thanks to our sponsors:

- Berkshire Asset Management
- Berkshire Hathaway GUARD Insurance Companies
- Community Bank NA
- Corcoran Printing
- Highmark Blue Shield
- Luzerne Bank
- McCarthy Tire Service
- Riggs Asset Management

Calendar of Events—May through September 2017

May 27—Saturday

Museum and Bishop Library closed in observance of Memorial Day Weekend.

May 28—Sunday

Nathan Denison House opens for tours, Sundays through September 24, 1-4 p.m. Denison Street, Forty Fort. FREE for members, \$5 for adults, \$3 for children.



June 9—Friday

Lecture, “Bringing the Giant to its Knees” by Mark Riccetti Jr., LCHS Dir. of Operations and Programs, 6:30 pm, Museum, FREE for members; \$5 for non-members. Seating is limited.

June 10—Saturday

Bus trip to the Museum of the American Revolution, Philadelphia, 8 a.m.-5 p.m. Join us and be one of the first to see this new museum! \$60 members, \$75 non-members, includes round-trip coach transportation and museum admission (lunch is additional). **Reservations and payment required by May 24.**

July 4—Tuesday

Museum and Bishop Library closed in observance of the Independence Day holiday—join us at the Wyoming Monument!

July 13—Thursday

Kids Crafts at the Museum! Build your own Hill Climber. 1-3 p.m. \$12 members; \$15 non-members. **Space is limited—reservations required.**

July 15—Saturday

Last day to see the “Bringing the Giant to Its Knees”: The History of the Giant’s Despair Hillclimb” exhibition. 12-4 p.m. Museum admission is FREE for members, \$5 for adults, \$3 for children.

July 15-16—Saturday & Sunday

Battle of Wyoming Walks, 10 and 1:30 Sat.; 1:30 Sun. \$7 for members; \$10 for non-members; \$5 ages 10-17. Please note that this is a two-mile, two-hour walk. First-come, first-served; **reservations required.**



July 27, August 10 and 24—Thursdays

Kids Crafts at the Museum! 1-3 p.m. FREE for members; \$5 for non-members.

August 3—Thursday

Portrait Walk at the Westmoreland Club. Learn about the movers and shakers of Luzerne County in the 1800s! 5:30-7 p.m. Champagne and hors d’oeuvres. \$25 for members, \$35 for non-members.

August 12—Saturday

Genealogy Workshop at the Bishop Library. Learn about our resources and how to research your family. 10 a.m.-noon. \$15 members, \$25 non-members. **Reservations required in advance.**



August 26-27—Saturday & Sunday

Encampment at the Denison House! Denison Street, Forty Fort, \$7 for adults, \$5 for children.

August 26—Saturday

Baseball in 1860—A hands-on talk about the rules, style and popularity of our national pastime and how it evolved. 12-2 p.m., Swetland Homestead, 885 Wyoming Avenue, Wyoming. FREE for members, \$5 for non-members.

September 2—Saturday

Museum and Bishop Library closed in observance of Labor Day Weekend.

September 14—Thursday

Exhibit Opening! “This momentous and tragic day”: The 45th Anniversary of Hurricane Agnes, 5-7 p.m. FREE! Supported in part by the Luzerne Foundation.

September 22—Friday

Gallery talk, “Is this a river rock?” by Allyson Earl, LCHS Museum Assistant. 6:30 p.m. at the Museum. Learn about how to tell Native American artifacts from pieces of stone and how the Natives made their stone tools. FREE for members, \$5 for non-members.

**To make a reservation for any event, call 570-823-6244, ext. 3
or email reservations@luzernehistory.org.**

Membership at the Luzerne County Historical Society



As of July 1, 2017, our membership structure will change. Except for Life membership, the fees will remain the same. We have clarified the benefits for each level. Please see below for the new structure:

Senior Individual (65 years and over) - \$20 annually (benefits for 1 person)

Individual—\$40 annually (benefits for 1 person)

Dual Senior (both 65 years and over) - \$40 annually (benefits for 2 people)

Family—\$60 annually (benefits for 2 adults with non-voting benefits for all kids under 21 living at the same address)

Patron—\$100 annually (benefits for 2 people)

Benefactor—\$250 annually (benefits for 2 people)

Life—\$2000 (benefits for 1 person, allowed one guest for admission and event/fee discounts)

Benefits:

- Free admission to all LCHS sites for number above
- Member rates on program fees/special events for number above
- Discount on research fees and photo reproduction fees
- Admission to member-only events for number above
- Three newsletters per year
- Gift Shop discount of 10%
- Voting privileges at annual meeting for number above
- Patron, Benefactor and Life—two guest passes annually
- Benefactor and Life—One 8x10 photo reproduction OR 1/2 hour of library research time

Business Membership Structure:

Business Level 1—\$250 annually

- Free admission to LCHS sites for 2 people
- Member discounts on programs & events for 2 people
- Admission to member-only events for 2 people
- Three newsletters per year
- Gift Shop discount of 10%
- Voting privileges at annual meeting for 2 people
- Member discount on research fees and photo reproductions
- Listed on LCHS website with logo (member to provide)
- Post on LCHS Facebook page when join/renew
- Listed in newsletter when join/renew

Business Level 2—\$500 annually

- All benefits of Level 1 plus:
- Free admission and discounts to events/program for four people
- Listed on LCHS website with logo and link to business's website
- Voting privileges at annual meeting for 4 people
- Two guest passes to LCHS sites

Business Level 3—\$1000 annually

- All benefits of Level 2 plus:
- Four guest passes to LCHS sites

2016-2017 LCHS Annual Appeal

A huge thank you to all who donated to the LCHS 2016-2017 annual appeal! These donations are essential to our operating fund and will allow us to bring you the 2017 programs that are listed in our calendar of events. Our fiscal year ends on June 30, 2017. We welcome donations in all amounts, which can be sent to the Luzerne County Historical Society, 49 South Franklin Street, Wilkes-Barre, PA 18701. Please mark your check "annual appeal" on the memo line. As of April 30, we received \$13,156 from 113 donors. Here, we recognize gifts received since our winter newsletter went out.

\$100-\$249

The Black Horse Foundation, Inc.
Mr. Brian Leffler
Mr. and Mrs. Jon Pollard
Mr. David Reed
Mr. and Mrs. James Shoemaker
Dr. and Mrs. Clement Valletta

\$99 and under

Ms. Doris Bickford-Swarthout
Ms. Elizabeth Chernyl
Ms. Diane Dickinson
Mr. Carl F. Goeringer Jr.
Mr. and Mrs. Gary Greenfield
Ms. Janet Gunther
Mr. Brian Patrick Hammond
Ms. Eleanore S. Honeywell
Mr. and Mrs. Robert Jarrow
Mr. and Mrs. Ronald H. Kaiser
Mr. W.M. Kanyuck
Ms. Patricia A. Krull
Mr. John J. Kurilla
Mr. C. Scott Letcher
The Lefkowitz Family Fund
Mr. Gordon Price
Mr. and Mrs. Eugene Roth
Mr. Matthew F. Schooley
Ms. Inez Stefanko
Mr. and Mrs. Donald Swartz
Ms. Helen Wasiakowski
Mr. and Mrs. W. Brooke Yeager III

We welcome our NEW members!

Walter E. Boyson
George Brown
Theresa Roberts Cataldo
Rob Coburn
Marie Davis-Williams
Margaret E. Daley
Kathleen Earle-Fox
Mr. and Mrs. Norman D. Newell
Jeanne Shelley Ratliff
Kathryn Anne Sweetra
Jan Willis
Peter Zubritzky

Thank you to Retiring Denison Advocates Louise Robinson and Florence Horowitz!

After thirty-two years of volunteer service with the Denison Advocates, Louise Robinson and Florence Horowitz have announced their retirement from active participation. The Luzerne County Historical Society deeply appreciates their service and recognizes their dedication to the Denison House and their commitment to preserving and promoting the history of the Wyoming Valley and the story of Nathan Denison's life.

During their tenure, Robinson and Horowitz served as president and secretary, respectively, of the Denison Advocates. They oversaw the operation of the property under the ownership of the Pennsylvania Historical



and Museum Commission until 2010, and under LCHS since then. They initiated and coordinated many special events and exhibitions, including doll shows, colonial children's fairs, craft fairs, colonial hospitality afternoons, military encampments and much more. Both were active tour guides at the house for many years. We thank them profusely for their dedication and service.

The Nathan Denison House at 35 Denison Street in Forty Fort opens for the 2017 season on Sunday, May 28, and will be open for tours on Sundays through September 24 from 1 to 4 pm. **Admission is free for members (\$5 for non-members and \$3 for children)!** Nathan Denison was one of the first forty shareholders in the Susquehanna Company to settle five new towns or townships in the Wyoming Valley in February 1769. Denison became a popular leader of the pioneer settlers from Connecticut. He served as a Justice of the Peace and colonel of the local militia, distinguishing himself in the ill-fated Battle of Wyoming in 1778.

Coming Soon! New Luzerne County Historical Society Website (www.luzernehistory.org)

Look for an announcement about our new website in the next few weeks. We have revamped the look and organization of our website. It will continue to grow over the next several years with planned additional content including a blog, educational materials and an online version of selections from our library and museum collections. Stay tuned!

News about the LCHS Museum and Library Collection...

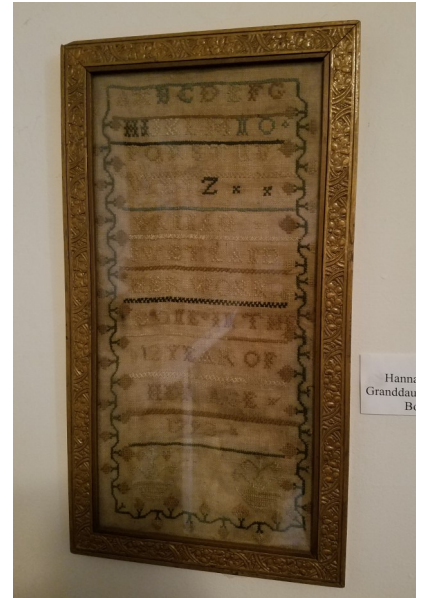
LCCHS Receives Grant to Conserve Swetland Family Needlework Samplers

We are the proud recipients of a PennEast Community Connector grant to perform conservation and framing work on two Swetland family needlework samplers in the collection. The Swetland Homestead, in Wyoming, Pennsylvania, was built in 1803 by Luke Swetland (1729-1823).

The two samplers were stitched by Luke Swetland's granddaughters. One was made in 1817 by Almira Swetland (1805-1880) and the other by Hannah Swetland (1783-1872) in 1793 (at right). Stitched in silk thread on linen cloth, the samplers are fragile and in need of conservation treatment and archival framing to preserve them for viewing and study by generations to come.

Museum Textile Services (www.museumtextiles.com) of Andover, Massachusetts, will complete the work on the samplers. They will be cleaned, archivally mounted and framed behind UV-filtering glass. LCHS plans to unveil the samplers once the treatment and framing are complete.

The PennEast Pipeline Community Connector grant program is focused, in part, on supporting not-for-profit organizations that advocate community culture and heritage preservation. Since 2014, PennEast Pipeline Company has contributed over \$550,000 to organizations that make a difference in their communities. We thank them for this generous grant!



LCCHS Chosen to Participate in Collections Assessment for Preservation Program

We are pleased to announce that LCHS is one of 75 institutions from across the country selected to participate in the inaugural year of the Collections Assessment for Preservation (CAP) program.

Administered by the Foundation of the American Institute for Conservation of Historic and Artistic Works (FAIC), CAP assists museums in improving the care of their collections by providing support for a conservation assessment of the museum's collections and buildings. A team of two preservation professionals will spend two days surveying the site and meeting with staff before preparing a comprehensive report that will identify preventive conservation priorities.

The Luzerne County Historical Society expects the program to be a first step in the next phase of its collections care work. The Society oversees four buildings and more than 250,000 objects, books, photographs and documents, which have been collected since its founding in 1858. The CAP survey will help us to prioritize cataloging and digitization projects as part of our forthcoming strategic plan. It will also allow us to better use our collection to share stories from our local history.

You could advertise here!

Our newsletter is mailed out three times per year to our membership of 500+ and is also available at the LCHS Museum and Bishop Library, the Denison House and at our events, reaching an audience of many more. If you would like to consider placing an advertisement in this space, please contact us at 570-823-6244 ext. 1 or info@luzernehistory.org.

Luzerne County Historical Society
49 South Franklin Street
Wilkes-Barre, PA 18701
Phone: 570-823-6244
Email: info@luzernehistory.org
www.luzernehistory.org

Non-Profit Org.
U.S. Postage
PAID
Wilkes-Barre, PA
Permit No. 150

ADDRESS SERVICE REQUESTED

Give the Past a Future
Bishop Memorial Library
Luzerne County Museum
Denison House
Swetland Homestead